
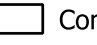
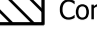






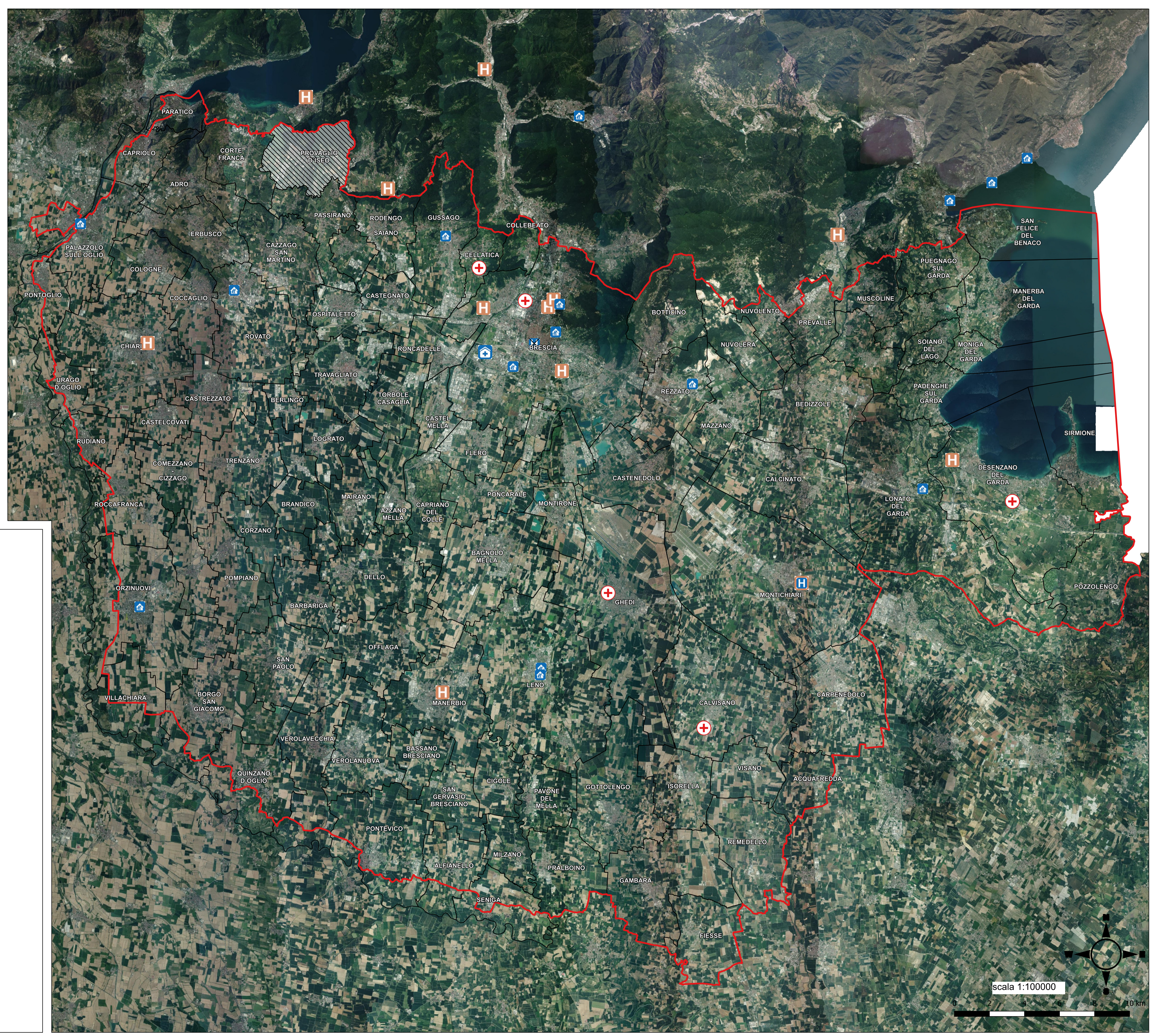


-  Limite PLP
-  Comuni interessati dal PLP
-  Competenza AIB trasferita a CMSB
- Strutture operative e sanitarie**
-  Sedi Croce Rossa
-  Sedi Pubblica Assistenza
- Ospedali**
-  Ospedale aperto, con pronto soccorso
-  Ospedale aperto, senza pronto soccorso
-  Ospedale chiuso
-  Altra struttura



**PIANO LOCALE DI
PREVENZIONE DI
ANTINCENDIO
BOSCHIVO (AIB) DELLA
PROVINCIA DI BRESCIA
2025-2034**

**ALLEGATO 12a
Carta delle strutture sanitarie**

